

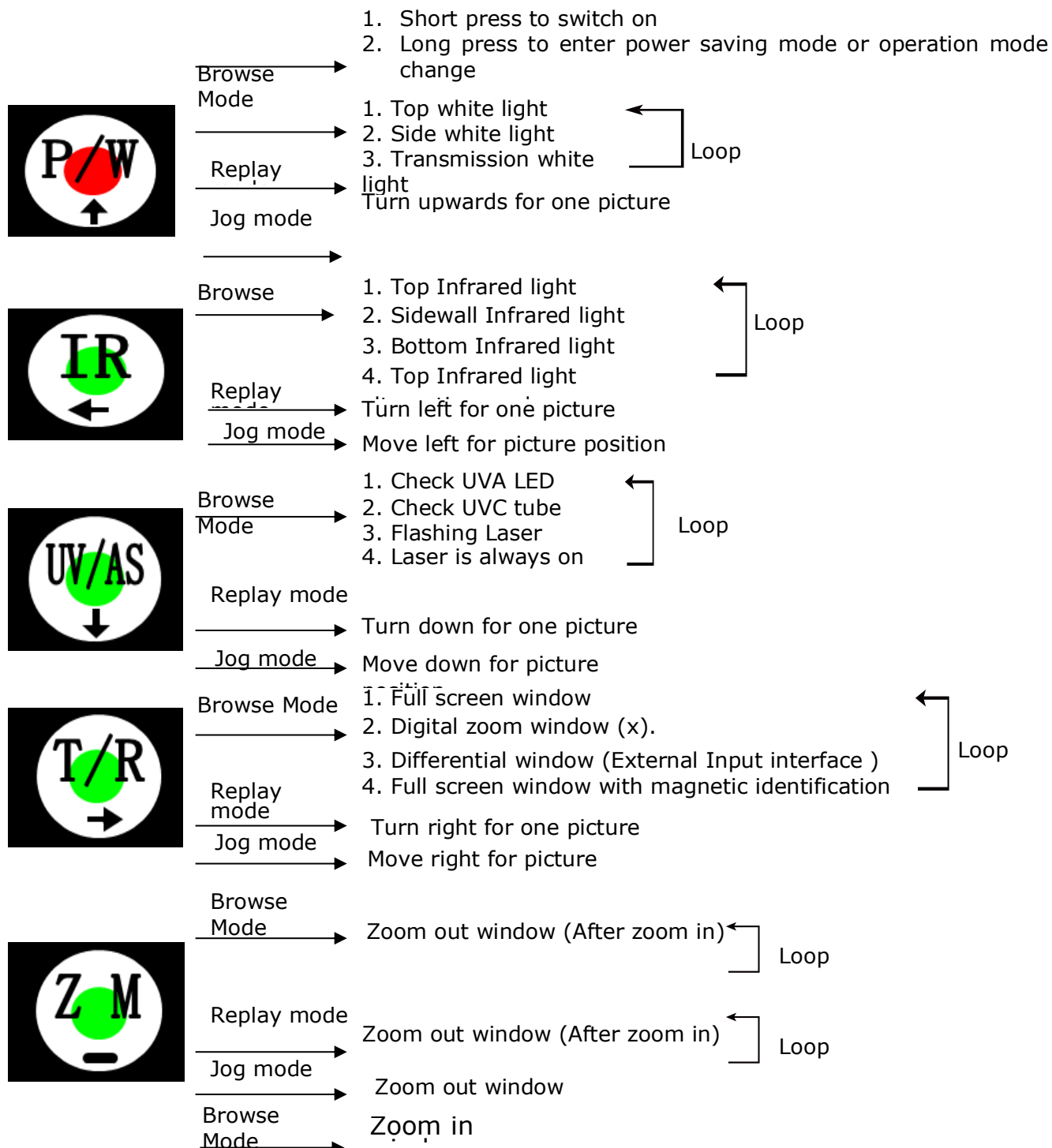


Content

Appearance and Chides to components	01
Control panel operating procedure	02-03
S-Micro Micro spectrum analyzer	04
MAG-VIDEO Magnetic Image analyzer	05
Analog video output	06
Digital video output	07
Driver program installation	08-10
Image processing software operation	11
Specification	12
Precautions and Packing list	13

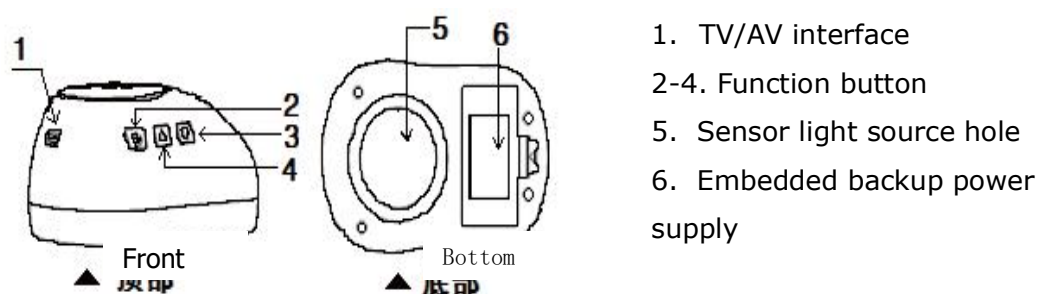
Function key operation instruction

Note : Short press below button for relevant function selection or the function selection loop



S-Micro microscope spectrum analyzer instructions

Device appearance



Operation procedure

Connect the microscope spectrum analyzer to Main unit with USB, press the "T/R" button on the control panel two times and, select the option to connect external micro spectrum analyzer, the external device power indicator will light up. Place the device on top of the specimen, align the detector with the check point, and select the function button to start checking.

Function2 "⏻" power switch button:

I、Power switch (To switch on/off device with 3 second long press).

II、Short press to switch the function (auto-alternation) between top white light, side white light and white cross-light.

Function3 "▲" Infrared button:

Short press to switch the function (auto-alternation) between top Infrared light 850, side infrared light 850, Blue light(Optional),crossed-infrared light 850/940 and transmission light.

Function4: "▼" UV light button:

Short press to switch the function (auto-alternation) between long UV light, short UV light, UV cross-light, Infrared light (Optional).

Mag-Video magnetic analyzer (Optional)

Cautions of operating Mag-Video magnetic analyzer

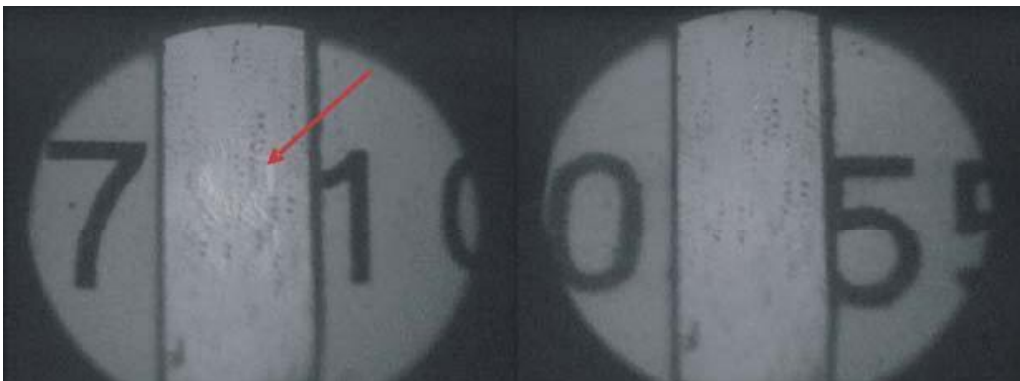
The Mag-Video magnetic analyzer sensor (at the bottom of device) is crystal and it can be easily damaged. Do not place it on top of metal object and touch it. Please do not disassembly by yourself or clean the sensor.

Mag-Video magnetic analyzer is very sensitive to magnetic field, to avoid any unnecessary disturbance, please place the specimen on the cushion provided during inspection.

Please keep the Mag-Video magnetic analyzer inside the box after usage to avoid the air dust attach to the sensor which might affect the inspection result.

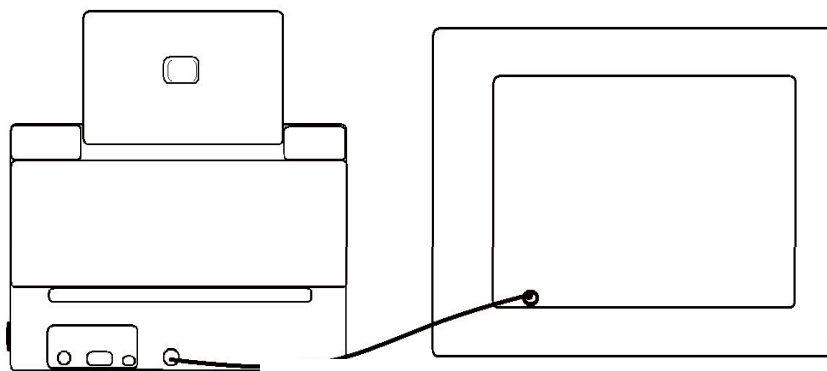
Operation procedure:

- 1) Switch from the Main unit to Mag-Video magnetic analyzer
- 2) Place the Specimen on the specific cushion provided
- 3) Place the Mag-Video magnetic analyzer slightly on the top of the

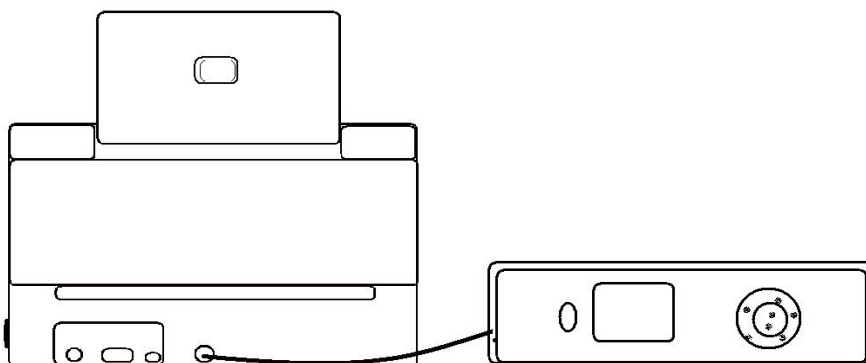


Analog Video Signal Output (Optional)

- Connect the video cable to the backside of Video Interface.
- Connect analog video to external equipment (e.g. TV, projector etc).
- Adjust Video output equipments' color and brightness.
- Ensure the external equipments are well connected, long press <Replay>, the equipment will automatically enter TV output mode, the current identification picture shows on the external equipment, long press the <Replay> again to exit TV output mod



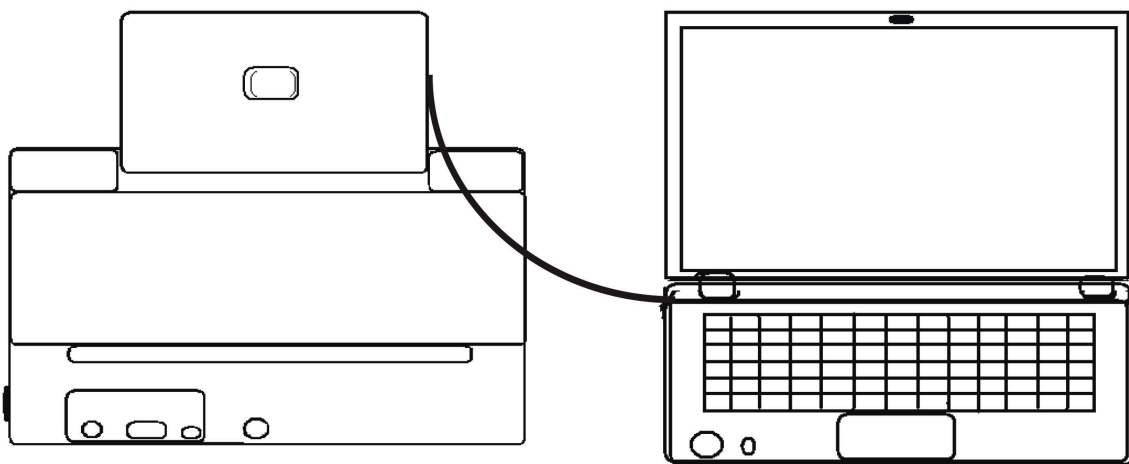
TV connection schematic



Projector connection schematic

Digital Video Signal Output

- Hardware driver installation is required for first use of the device.
- Connect the device to USB interface of computer (Note: please check the USB interface model).
- Image collection and analysis can be done with the software of video collection and review function.



Computer connection schematic

Hardware requirements:

CPU: Intel Celeron-II and above

Memory: > 128M

Hard disk: >800M

Graphics: 32M

Interface: USB2.0

Display: 1024x768

Software requirements:

Pre-installed system with Microsoft

Windows 98 above

- The equipment has HD video (HDMI) preview and output function, the image authorization and checking can be done with the connection of HDMI interface to HD TV, the output standard is 720P (1080*720).

Driver installation procedure

一、 Driver program package installation

- 1) copy this design movement in the SD card driver to the desktop (as Graph 1).
- 2) Select the file of the journal <pccam-Drivers> load the < Setup. exe > driver (as Graph 2).
- 3) Also can choose corresponding system corresponding to install driver directly (as Graph 3).

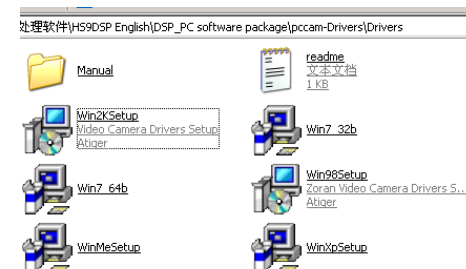


Graph 1



Graph 2

- 4) After switch on the device, connect to computer with USB, and open the "AMCAP9.EXE" Or "Banknotes image analysis.EXE" software. The computer will automatically remind to load driver program for the first use of connection to the device. Follow the computer software installation instructions to load program and install it in the computer hard disc, at last, finish the hardware driver program load task.



Graph 3

Notes:

Manually load driver program is available by selecting the device hardware in the device manager and update its driver program. it is also available by deleting the current device hardware and refresh the device manager, the computer will automatically find new hardware, and remind to load driver program, follow the instruction to complete loading driver program.

◆ Cautions

- Do not operate the detector in uncontrolled environment such as rapid temperature changes, $>40^{\circ}\text{C}$ or $< 0^{\circ}\text{C}$, high voltage, electromagnetic interference, radiation and high humidity etc.
- Keep the appliance away from wetting and never immerse it in water.
- To avoid the appliance drop or severe shock or vibration
- Turn off the device when unattended or not in use for a period of time.
- Only standard optional device is compatible to the external device interface of the device
- Notes: If problems should arise with your detector, you are recommended to contact the dealer to get the suggestion of troubleshooting, please do not disassembly by yourself

Package list			
Standard device list			
Main unit	1	Power adapter	1
USB cable	1	Power cable	1
AV data cable	1	Manual	1
Warranty card	1	Driver CD	1
Optional device list			
Mag-Video	1	HDMI cable	1
USB cable	1		